

700-2700MHz 1 TO 3 WAYS SPLITTER FOR N FEMALE

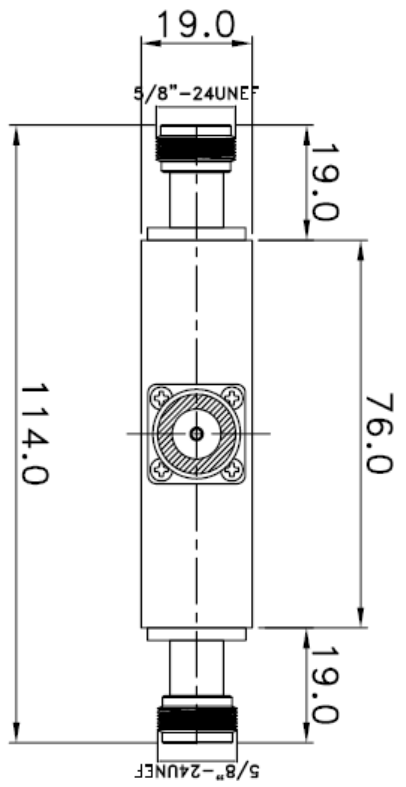
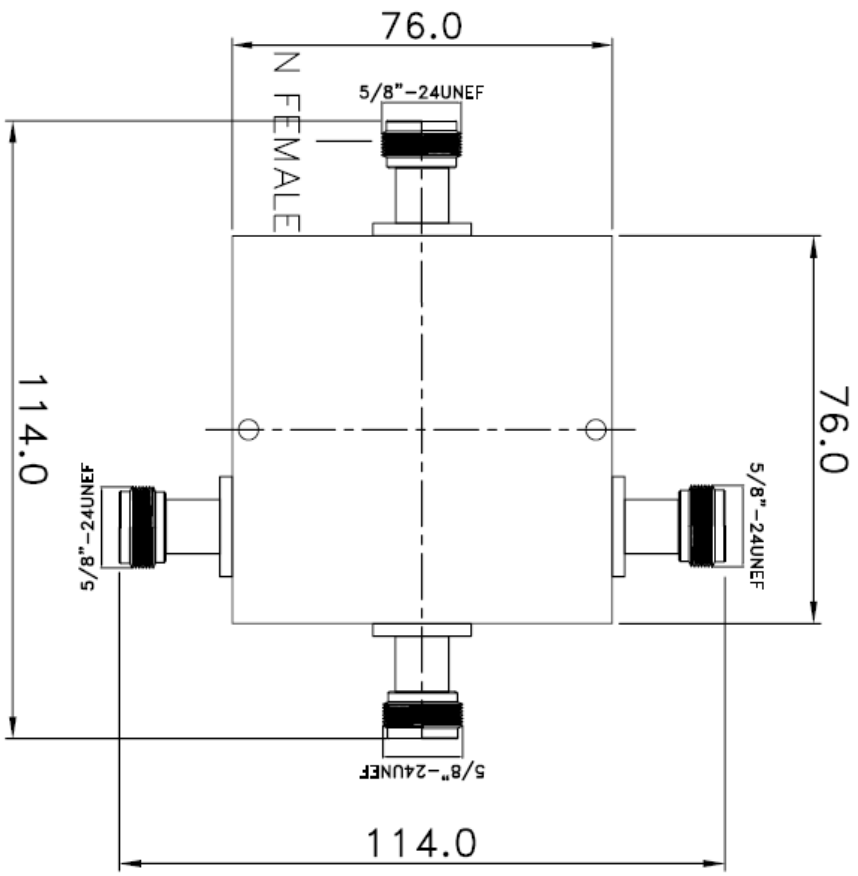


ROHS

Specification		
Model No.	SP-0727-02	
Description	1 TO 3 Ways Splitter	
Frequency Range (MHz)	700 -2700MHz	
Insertion Loss (dB)	<= 6.0	
Amplitude Balance (dB)	<= 0.3	
Phase Balance	5°	
Standing Wave	VSWR (in)	<= 1.5
	VSWR (out)	<= 1.5
Isolation (dB)	>= 22	
Power (W)	>= 30	
Dimension (mm)	L114 x W114 x 19mm	
Port Connectors	N Female	
N.W (g)	298g	

REV	DESCRIPTION	DRAWN	DATE

700-2700MHZ 1 TO 3 WAYS SPLITTER FOR N FEMALE



7	Power (W) : ≥ 30
6	Port Connectors : N FEMALE
5	Isolation (dB) : ≥ 22
4	Phase Balance : 5°
3	Amplitude Balance (dB) : ≤ 0.3
2	Insertion Loss (dB) : ≤ 6.0
1	Frequency Range (MHz) : 700-2700 MHz
NO	Description

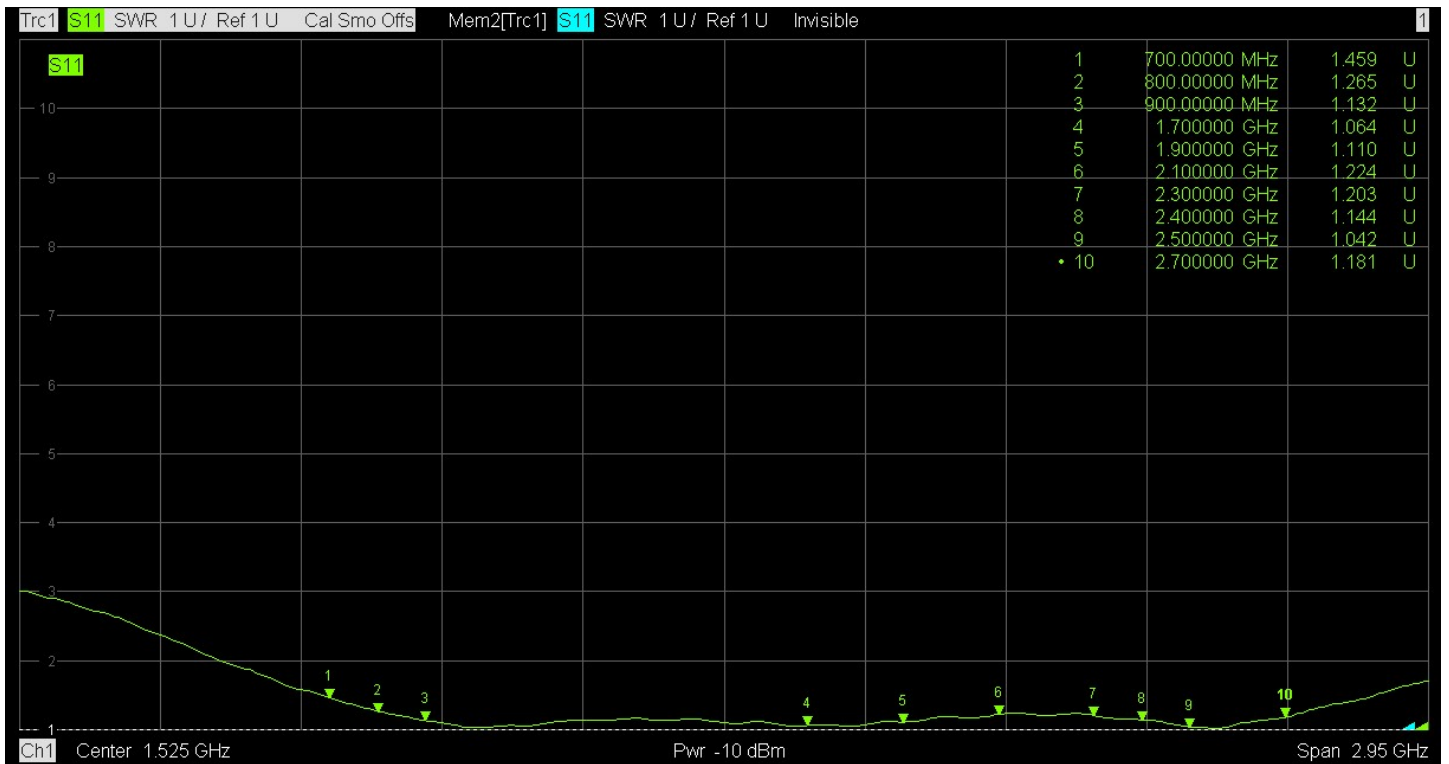
UNLESS OTHERWISE SPECIFIED
 1.REMOVE ALL BURRS
 2.BREAK ALL CORNERS & EDGES CO.15 MAX.
 3.CHAMFER 1ST & LAST THREADS 45.
 4.DIAMETERS ON COMMON CENTERS.
 TO BE CONCENTRIC WITHIN 0.1 MIL.
 5.ALL DIMENSIONS ARE AFTER PLATING.

* MAJOR DIMENSION UNLESS OTHERWISE NOTED TOLERANCES
 0.5-6 = ± 0.2
 6-30 = ± 0.4
 30-120 = ± 0.6
 120-315 = ± 1.0
 ANGLES = $\pm 1^\circ$

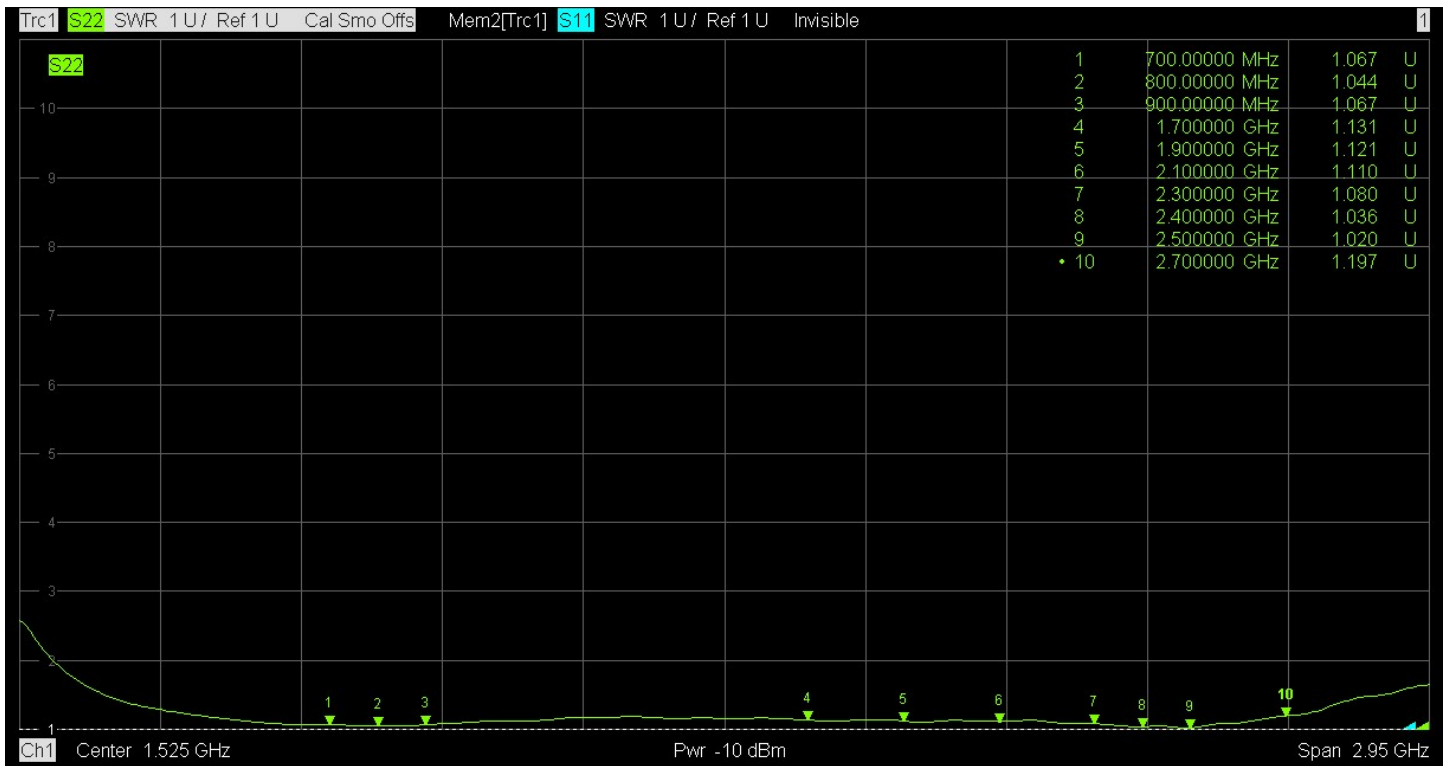
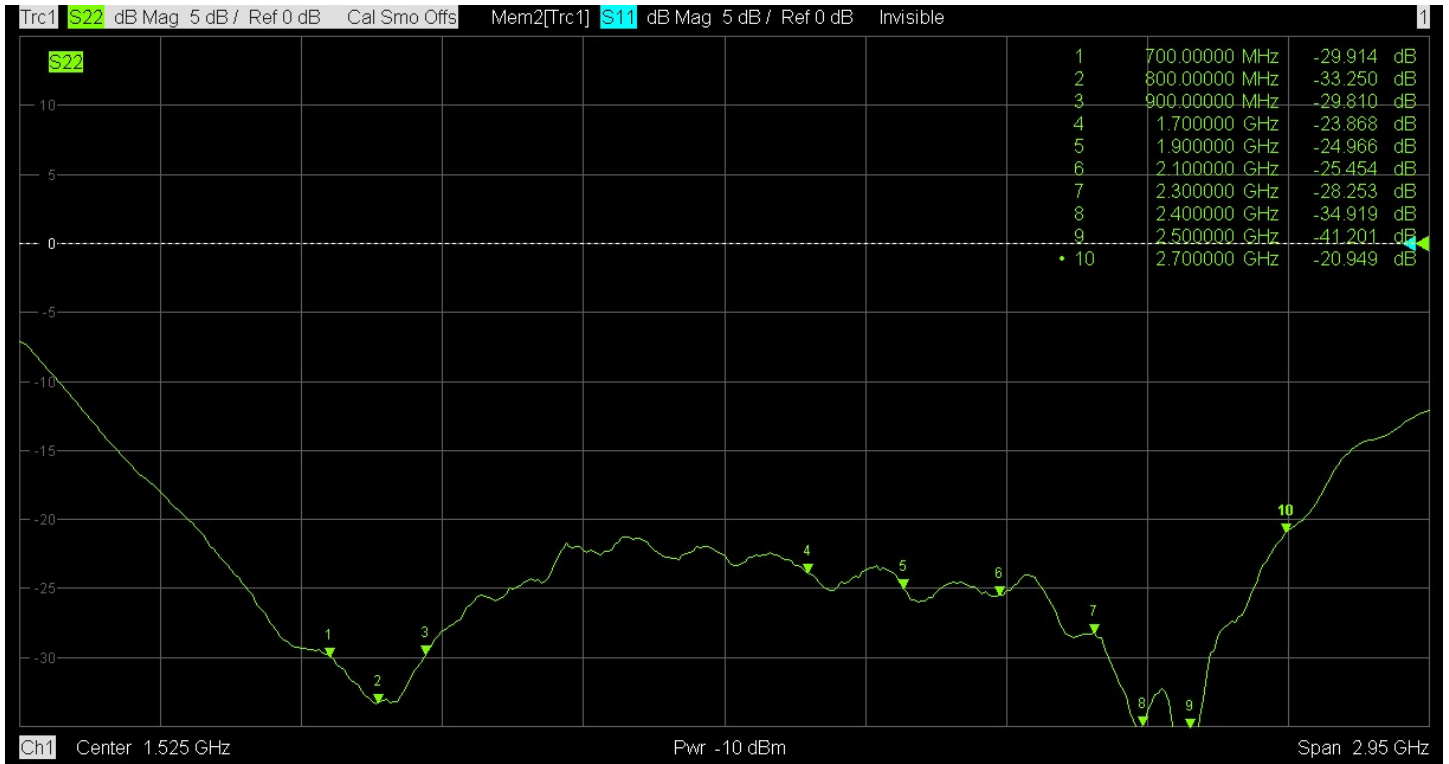
APPROVED	
CHECKED	
DRAWN	andrew
DRAWN DATE	03/07/04

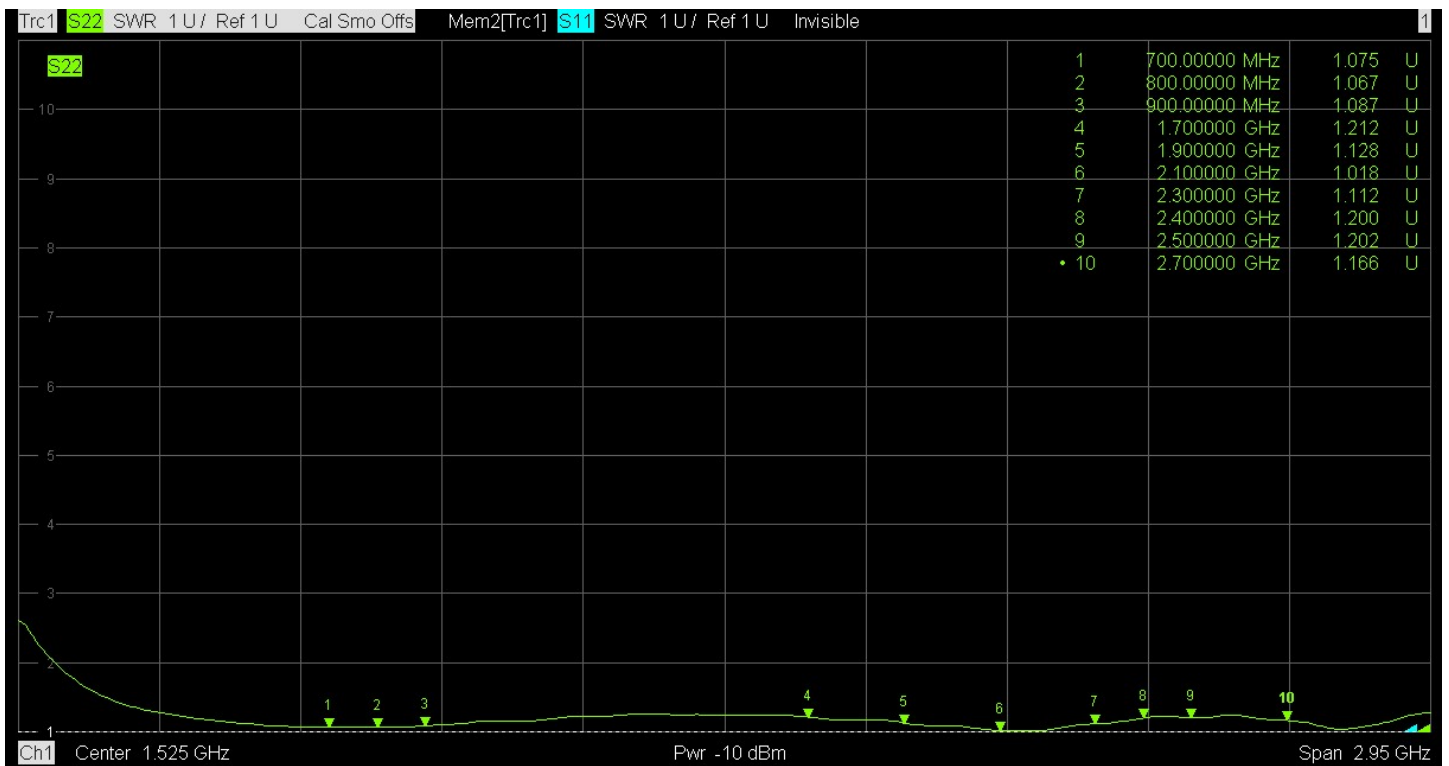
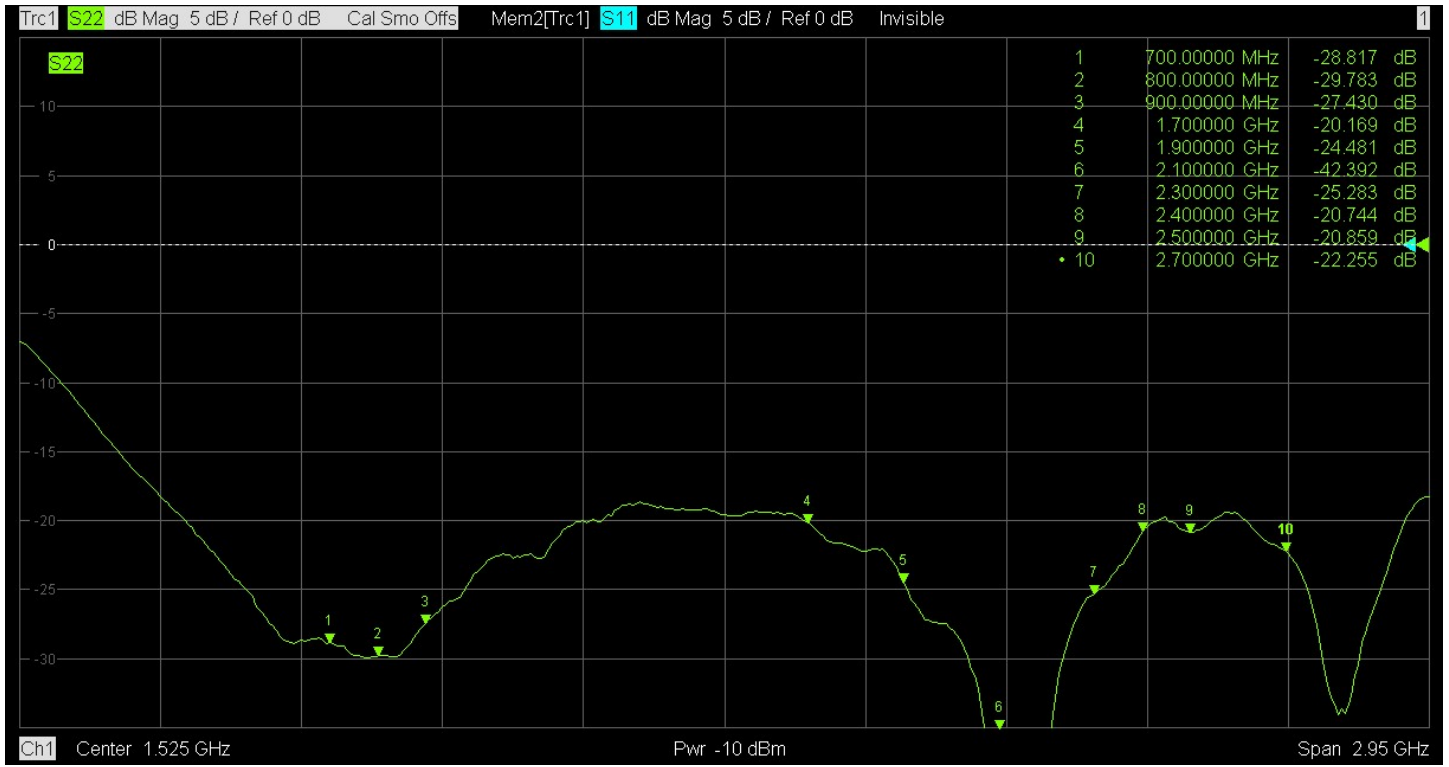
TITLE	DRAWING NO.	REV
700-2700MHz 1 TO 3 WAYS SPLITTER FOR N FEMALE	SP-0727-02	A
FILE NO.		

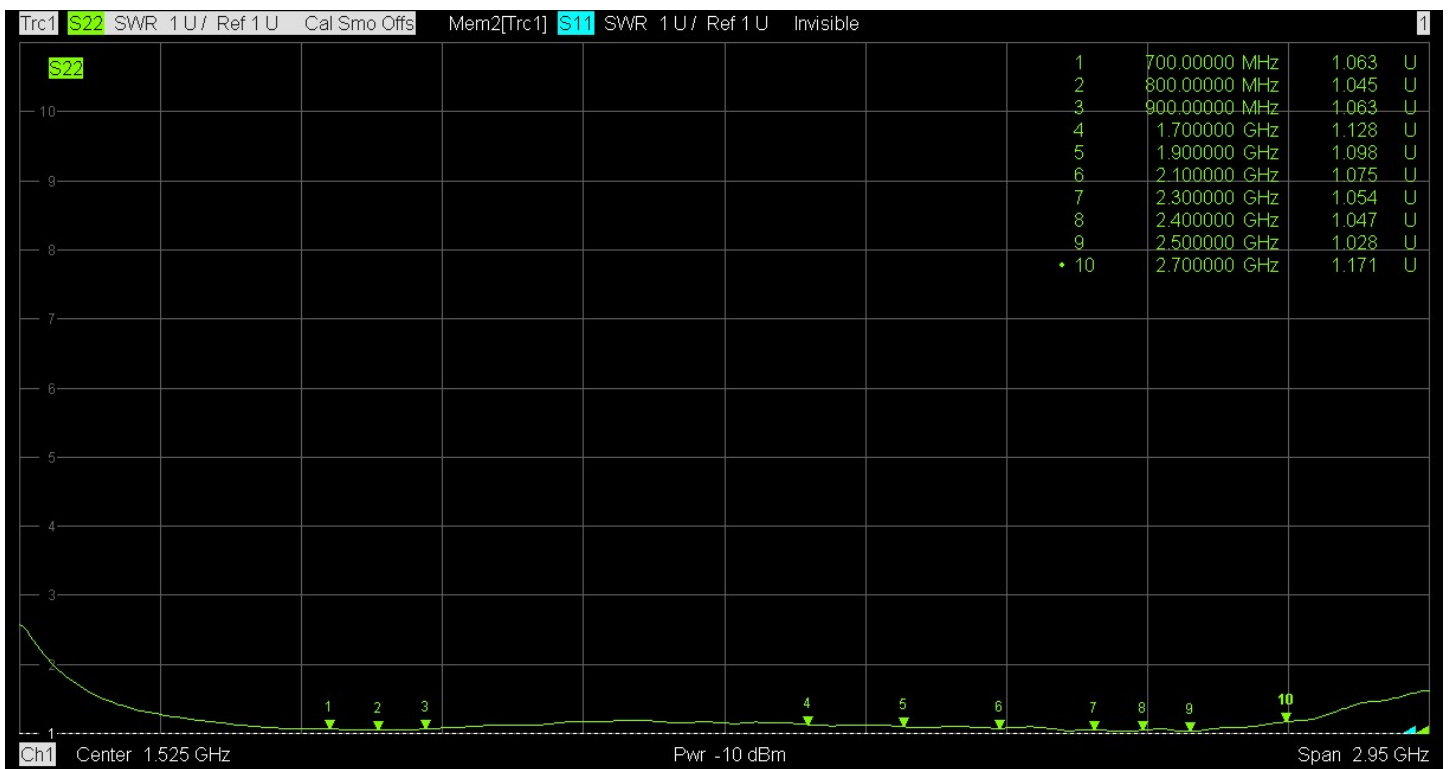
S11



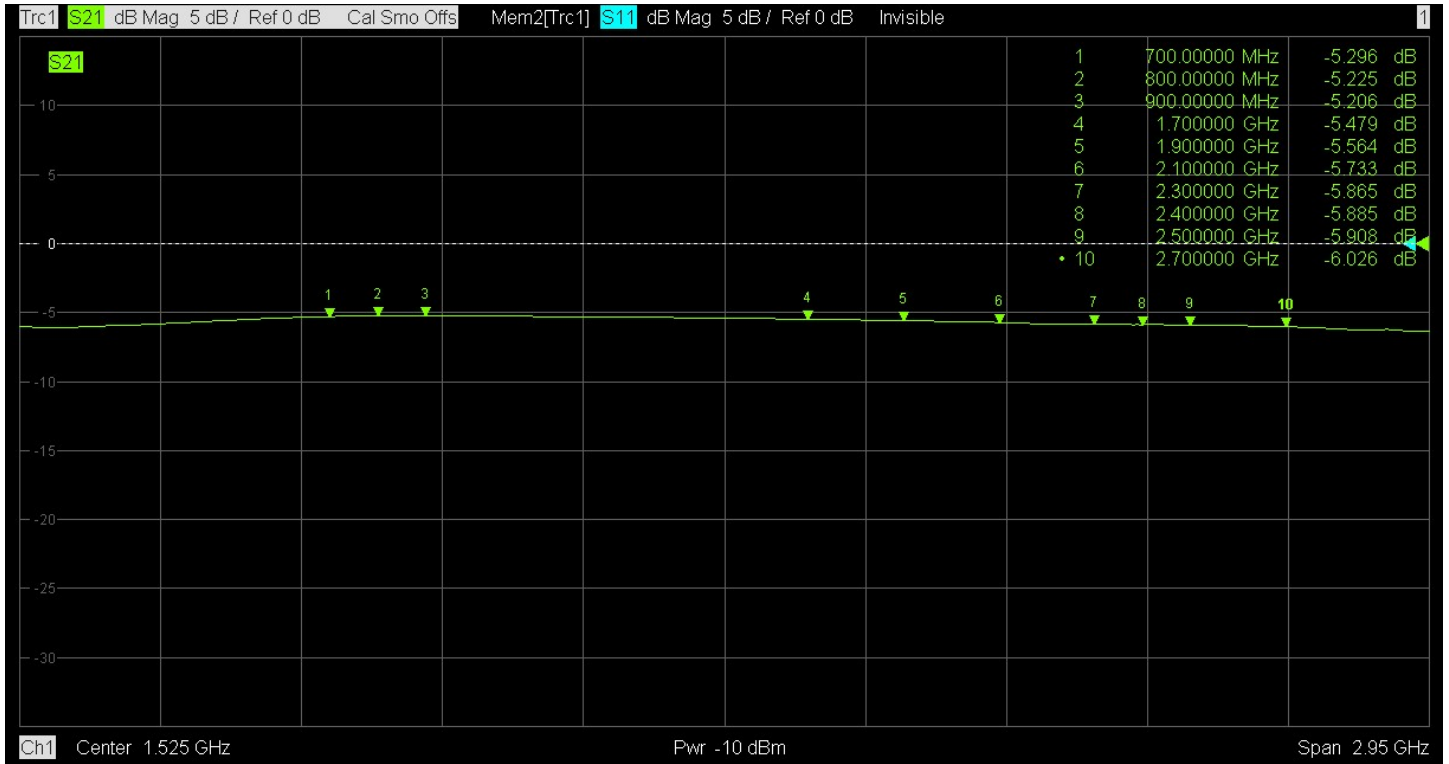
S22



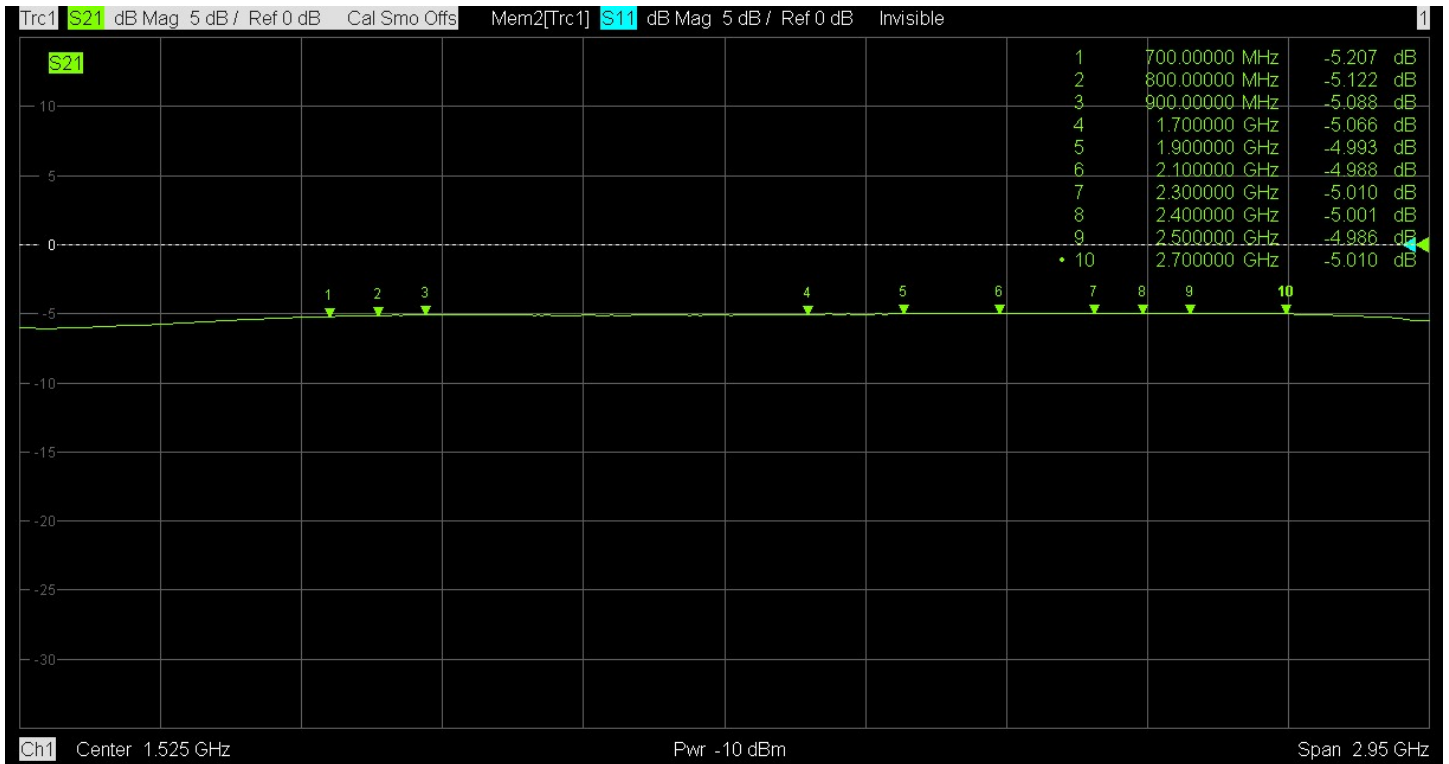




S12



S13



S14

